



GLASGOW

OPEN
HOUSE

ARTS
FESTIVAL
2017

APRIL 28TH
- MAY 1ST

Glasgow Open House Arts Festival is a biennial event, ran by a voluntary group. We celebrate Glasgow's vibrant, insightful and industrious culture, by inviting it's residents to present art, music, and performance in their homes!

The festival is an opportunity for artists of all backgrounds to get involved and exhibit their work in unusual spaces, linking DIY projects together to reach new and wider audiences. Glasgow Open House brings communities together; creating opportunities to meet new people, get to know your surrounding area, and connect with your neighbours!

This year's festival boasts 69 different venues featuring the work of over 200 artists, who have contributed to a wonderfully diverse and outstanding programme.

Look out for our colourful flags and ceramic tiles dotted around the city to mark all Open House venues! This year we've worked with several fantastic organisations based in Glasgow: The Coach House Trust, Project Ability and the Women's Art Group at Milk Café. Artists and participants have kindly created these characterful wayfinders to be exhibited alongside our programmed exhibitions and events.

Visit glasgowopenhousearts.co.uk to check out event and exhibition descriptions in more detail, as well as the online programme and map. You can also find Individual artist and organisation profiles, a list of Art Walks for this years festival and photographs of all wayfinders made in the lead up to this year's festival.

The festival is open daily, Saturday 29th, Sunday 30th and Monday 1st May, 12pm-6pm. There are exhibitions and events which have opening times outwith the above, so make sure to check this programme before you go.

Join us at the opening event on Friday 28th at 6pm (see venue 41 and 42 in this programme).

Venue 1: Murano Street, Glasgow

Water-Path

Fronde

A participatory and imaginative event to explore what Venice and Glasgow can have in common.

Open Sunday 3pm to 6pm

Disabled Access - Yes

Venue 2: Flat 1/2, 5 Ruthven street, Glasgow, G12 9BY

at home with very friendly

Amy Dawn Thornton, Andrew Sim, Brendan McGuire, Paul McKee & Winnie Herbstein

A "salon-style" exhibitions of paintings from five artists from the Very Friendly/withfc programme.

Open daily 12pm to 6pm

Venue 3: 104 Byres Road, G12 8TB

Never Be Late For Work Again

Bobby Sayers

An interactive play, accessed through an advert in the "magic window", about a future where automation has been accomplished, performed by a chatbot, written and programmed by the artist.

Open daily, 24 hours

Disabled Access - Yes

Venue 4: Flat 1/1, 462 Paisley Road West, G51 1PX

Hot Tub Kiln Machine

Kevin Andrew Morris

Developing the use of atmospheric firing in my work I aim to construct a wood fired kiln that will also heat a hot tub in the garden. A selection of wood fired ceramics will also be exhibited indoors.

Open Saturday 12pm to 6pm & Sunday 12pm to 6pm

Venue 5: Kelvinbridge subway station

Radical Home Cinema - Film

Screening Bikes vs Cars

Cinema Up Collective

Bikes vs Cars is a documentary about the bike and what an amazing tool for change it can be. It highlights a conflict in city planning between bikes, cars and a growing reliance on fossil fuels.

Open Sunday 3pm to 6:30pm

Venue 6: Flat 2/1, 29 Park Road, Glasgow, G4 9JD

Nostalgia for Terrible Times

Danny Pagarani, Georgia Sparkes, Jens Masimov, Jonas Jessen Hansen, Julia Boman, Peter Basma-Lord & Rachel Woodside

At times of crisis we look for simple stories to make sense of the world. We present one such (oversimplified) story. One big machine powered to describe its surroundings by using outmoded technology

Open daily 12pm to 6pm

Venue 7: Flat 2/1, 309 Great Western Road, G4 9HR

All Done Up Like A Kitchen Bed

Calum MacGillivray, Jordan Hunter & Lotte Fisher

A colourful environment of odd materials and strange characters, our project explores play and imagination in the home; a kitchen alcove installation that marries unreal visions with social history.

Open daily 12pm to 6pm

Venue 8: Flat 2/1, 31 Barrington Drive, G4 9DS

Roots

FnuF, Jo Foster, Martina Alberi, Sam Mwiraguzu, Siorcha Fitzgerald, Stella Phipps & Zenga the Titan

Roots celebrates nature, through visual art and live musical performances. Viewers will experience a surreal journey as they navigate this space.

Open daily 12pm to 6pm

Venue 9: Flat 1/1, 16 Woodlands Drive, G4 9EH

Painters Don't Paint

Josephine Lohaar Self, Lucie Holzer & Sarah McWhinney

'Painters Don't Paint' is an exhibition showcasing diverse work from three final year Painting and Printmaking students. The work takes form through animation, film and wall hangings.

Open daily 12pm to 6pm

Venue 10: Flat 1/2, 31 Woodlands Drive, G4 9DN

Efflorescence

Violet Blyth

Efflorescence explores the temporal and non-permanence of creation using childhood pass-times to navigate memories and possibilities.

Open daily 12pm to 6pm

Venue 11: Flat 2/2, 19 Rupert Street, G4 9AP

19 Rupert Street, live for the first time since 1967

Rachael Simpson

The work for 'For the first time since 1967, 19 Rupert Street,' will create a live music event and result in a re-recorded live album from the original home of 19 Rupert street.
Open Saturday 12pm to 5pm & Sunday 12pm to 5pm
Disabled Access - Yes

Venue 12: Flat 2/3, 184 Woodlands Road, G3 6LL

Archipelago

Alison Johnston, Ellene Mash, Lizzie Urquhart, Lucy Mullican, Pippa Lobban, Rachael Hood & Tamara Macarthur

An exhibition which encapsulates a collective of seven close friends cross-disciplinary explorations of one location, Islay.
Open daily 12pm to 6pm

Venue 13: Woodlands Cottage, access through 18 West End Park Street, G3 6LG

The Hidden House

Kim Paterson

Discover the hidden house, observe work in progress by current resident (textile art), make a souvenir to remember your visit.
Open daily 12pm to 6pm

Venue 14: Fourwalls Co-operative Housing Association, 35 Carnarvon Street, G3 6HP

Radical Home Cinema - Four Walls' screening - Go Fish

Cinema Up Collective

Film: Go Fish. New Queer Cinema film from early 90s.
Open Saturday 4pm to 6pm

Venue 15: Flat 2/1, 51 Grant Street, G3 6HJ

Freshly Baked Domestic Goddesses

Allegra Salindini, Caitlin Higgins, Grace Higgins Brown & Pea Doherty

It's been said that we're domestic goddesses, but does that work for or against us as women in the art world, let alone the world at large? Welcome to our collection of domesticity, ceramics and food.
Open Friday 12pm to 5pm, Saturday 12pm to 5pm & Sunday 12pm to 5pm

Venue 16: Flat 3/2, 49 West Princes Street, G4 9BS

Inside/Outside

Amy DG, Eithne O'Neill, Eve King, Freya Taylor, Megan Rudden, Samantha Dick & Shaheeda Sinckler

Group exhibition involving artists from various backgrounds, working in different media, exploring ideas surrounding introversion and extroversion through the use of our living space.
Open Friday 7pm to 10pm, Saturday 12pm to 6pm & Sunday 12pm to 6pm

Venue 17: Flat 3/1, 61 West Princes Street, G4 9BS

Carillon

Bryony Rose & Max Syed-Tollan

Our flat becomes a bell tower - come and ring the clay carillon of West Princes Street, an interactive sound-sculpture by Bryony Rose and Max Syed-Tollan.
Open daily 12pm to 6pm

Venue 18: 63 West Princes Street, G4 9BS

The Close/The Corridor

Alexander Burch and Harriet Rose Morley

The Close at 63 West Princes St is a unique space, a non-space: a passage or vestibule that currently holds no purpose but to connect the flats.
Open Saturday 12pm to 6pm, Sunday 3pm to 6pm & Monday 12pm to 6pm

Venue 19: Flat 1/2, 31 Windsor Terrace, Glasgow, G20 7QW

"The W.C." (The Windsor Collection)

Freya Fullarton, Hamish Chapman, Joanne Dawson

The Windsor Collection exhibits new works by the residents of 31 Windsor Terrace (Hamish Chapman, Joanne Dawson + Freya Fullarton) exhibited alongside our private (+ permanent) collection of artworks.
Open daily 12pm to 6pm

Venue 20: The Glue Factory, 22 Farnell St, G4 9SE

Our House, Your House

Glasgow Tool Library

GTL host a day of making. Alongside facilitators, participants will design and build structures based on four domestic themes: Living Room, Dining Room, Kitchen, and Bedroom.
Open Sunday 10am to 9pm & Monday 12pm to 5pm
Disabled Access - Yes

Venue 21: Flat 6/1, 165 Hill Street, Glasgow, G3 6UQ

Reflections; From the Toilet Bowl

Klarissa B Webster

A mockery and an acknowledgement of the folly of humankind, a crude anti-homage to the strangest animal on earth.
Open daily 12pm to 6pm
Disabled Access - Yes

Venue 22: Flat 0/1, 52 Rose Street, Garnethill, G3 6SH

What would it be like to live ?

Maya Kincaid

Work by Maya and 6 children aged 6-9. It explores living in uninhabitable spaces, using ceramics, audio, film, drawing and more. The installation is a journey through their collective imaginations.
Friday 6pm-7:30pm, open daily 12pm to 6pm
Disabled Access - Yes

Venue 23: Project Cafe, 134 Renfrew St, Glasgow G3 6ST

Cafe Cinema Up - Project Cafe's screening: Life Off Grid

Cinema Up Collective

Film: Life off Grid, a two-year journey exploring the lives of Canadians who have made the choice to disconnect. It is a film about people who have chosen to build their lives around renewable energy.
Open Saturday 7pm to 9pm
Disabled Access - Yes

Venue 23: Project Cafe, 134 Renfrew St, Glasgow G3 6ST

Trust Works

Coach House Trust

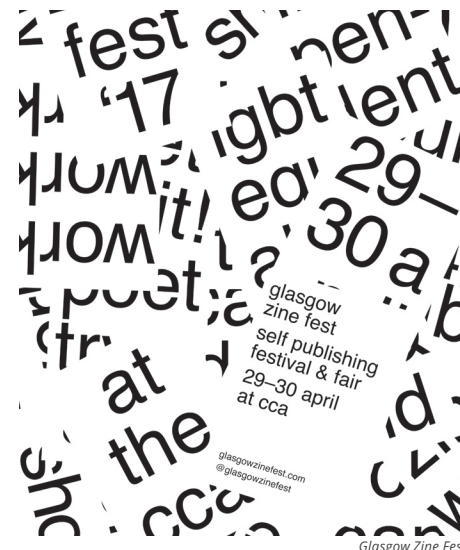
A selection of work from the artists at the Coach House Trust. www.thecht.co.uk
Open Friday 9am to 5pm, Saturday 10am to 5pm & Monday 9am to 5pm
Disabled Access - Yes

Venue 24: CCA, 350 Sauchiehall St, Glasgow G2 3JD

Glasgow Zine Fest

Glasgow Zine Fest

GZF is an independent publishing festival that champions DIY art and empowerment. Zine fair, screenings, talks, seminars, and a series of practical workshops in zine-making over 2 days.
Open Saturday 11am to 6pm & Sunday 11am to 3pm
Disabled Access - Yes



Venue 25: Paint & Mortar, Boudon Building, Scott St, Glasgow, G3 6RQ

Glasgow Open House Information Hub

Paint & Mortar

Paint & Mortar is a new, independent art supplies shop which is acting as an information hub for Glasgow Open House Arts Festival 2017. Pick up your programmes and maps here.
Fri 9-5.30, Sat 12-5pm, Sun closed, Mon 9-5.30

Venue 26: Flat 3/2, 420 Sauchiehall Street, G2 3JD

420 Sauchiehall

Adel Gaspar, Ben Doran, Claudio Cristini, Dani Farkas, Daphne Potamiti, Dilara Kuran, Mate Gehberger & Natalia Poniatowska

We'd like to share our interest by letting people into our everyday work in progress experience. It will be a journey through 5 rooms, each really different, from art through music and performance.
Open Saturday 3pm to 10pm, Sunday 1pm to 8pm & Monday 1pm to 8pm

Venue 27: Flat 2/2, 245 North Street, Glasgow, G3 7DL

[sic]

Angeli Bhose, Dafydd Jenkins, Kirsty Leonard & MollyMae Whawell

Hot-seating; we have been inhabiting the roles of artists and audience members in post-show Q+A sessions. Fictional artworks emerge from these staged conversations as we put one another on the spot.
Open daily 12pm to 6pm

Venue 28: Flat 2/1, 100 Elderslie Street, G3 7AR

my body is my most immediate tool

Annie Crabtree & Nikki Kane

The internal windows of the tenement flat have been transformed into a floor to ceiling screen to play host to video works in progress that explore themes of the body and place.

Open Saturday 12pm to 6pm & Sunday 12pm to 6pm

Venue 29: Skypark 5, 45 Finnieston Street, Glasgow, G3 8JU

By end of play

Aaron McCarthy, Alex Williamson, Alistair Grant, Bobby Sayers, Charlotte Fountaine, Claire Weale, Leonie Sinden, Nikki Kane, Phill Wilson-Perkin & Roos Dijkhuizen

By end of play explores the aesthetics, structures and experiences of office spaces, considering them as environments that are both incredibly mundane and richly odd.

Open daily 12pm to 6pm

Venue 30: Finnieston House Cafe, 994 Argyle Street, G3 8LU

Oddera

Christina Macpherson, Harvey Dimond, James Lind, Kristina Zalete, Luke Pilkington & Myra Ostacchini

Oddera presents an odd opera. Finnieston House Cafe will host the installation of an uneasy staged version of home. Twice a day the opera will perform "live" for 15 minutes at 1pm and 5pm.

Open Friday 5pm-6:30pm, open daily 12pm to 6pm
Disabled Access - Yes

Venue 31: Unit 42, Hidden Lane, 1103 Argyle Street, G3 89D

Unswapt House

Calum Sutherland, Ewan Murray, Lindsey McLean, Rhett Leinster Evans & Stephen Polatch

An exhibition of paintings, sculptures, and objects presents the myths, adoptions and cultural accretions of Glasgow.

Open daily 12pm to 6pm

Venue 32: Flat 3/2, 53 Bentinck Street, G3 7TS

Steal the Show

Jessica Wilson

Curated by Jessica Wilson, Steal the Show will be a salon style exhibition that reflects the energy, range and diversity within contemporary painting practice throughout the UK and further afield.

Open daily 12pm to 6pm



Steal the Show, Jamie Limond

Venue 33: Meet at 63 West Princes St, G4 9BS

Tokyo to Glasgow: An introduction into Hyperart Thomasson in Glasgow

Harriet Morley

In 1970's Tokyo, Genpei Akasegawa began to notice architectural objects, carefully maintained but serving no apparent purpose, aesthetic or otherwise. They called these objects 'Thomassons'.

Open Sunday 12pm to 2pm

Venue 34: South side, west end, east end, city centre, north-ish

You and me pal, we're made of the same stuff

Lauren Davis

Vinyl text has been installed at bus stops around the city for viewers to engage with between venues participating in Open House 2017.

Open daily 24 hours

Venue 35: Flat 3/2, 382 Duke Street, Dennistoun, Glasgow, G31 1DN

re-evaluate the ceiling

Debbie Young & Katerina Sidorova (SID YOUNG collective)

The ceiling has remained a no-mans-land: aside perhaps from a solitary lamp. Set in a Dennistoun tenement flat, the 'SID YOUNG' artist initiative explore this deserted landscape.

Open daily 12pm to 9pm

Venue 36: 52 Roslea Drive, G31 2QS

Ro/Room

Giulia Lazzaro

Enter into a universe where floors are soft and humans are bigger than windows and explore the politics of domestic space in this ground floor tenement apartment.

Open Saturday 12pm to 6pm & Sunday 12pm to 6pm

Venue 37: Flat 1/2, 45 Garthland Drive, G31 2RF

Off-Screen

Jessica Whiteley, Lucy Payne, Mari Campistron, Maurice Andresen & Tom Joyes

An amalgamation of sculpture, film, painting and illustration come together in 'Off-Screen' - an exhibition exploring the nature of the 'screen' in all its forms and as a window into narratives.

Open Saturday 10am to 5pm & Sunday 10am to 5pm

Venue 38: Flat 1/1, 129 Garthland Drive, Dennistoun, G31 2SQ

A PLACE IN THE SUN: DENNISTOUN EDITION: #2 JACK HEYDON HOW DO YOU MOVE?

Jack Heydon & Tilly Heydon

By asking guests to learn a specific dance How Do You Move? is an interactive analysis of movement to music. The video installation will grow throughout the 3 days documenting the variety of guests.

Open daily 12pm to 6pm

Venue 39: 128-130 Bridgegate, G1 5HZ
Making and moulding with Theatre Nemo

Theatre Nemo

Come try your hand at screen printing and mask making, amongst other techniques, at this visual art workshop with Theatre Nemo!

Open Saturday 1pm to 3pm

Disabled Access - Yes

Venue 39: 128-130 Bridgegate, G1 5HZ
Theatre Nemo Shows

Theatre Nemo

Exhibition of work from the Theatre Nemo Visual Arts group, and screenings of short film and animation created in previous Community projects, Hospital projects and Prison projects.

Open Saturday 5pm to 7pm

Disabled Access - Yes

Venue 40: 16 Nicholson St, Glasgow, G5 9ER

After Hours

Jessica Susan Higgins

Jessica Susan Higgins will exhibit new work for the Open House Festival 2017 as a part of 16 Nicholson Streets yearly program. A two floor exhibition and a free workshop/event hosted by Jessica.

Open daily 12pm to 6pm

Disabled Access - Yes



After Hours - Jessica Susan Higgins

Venue 41: Laurieston Arena, 101 Gorbals St, Glasgow, G5

BABAWALTZ: GOH OPENING 2017

Babaloose & Bart Waltz

A celebratory maypole dance with performances and music to join participants together in spirit and kick off the festival the right way.

Open Friday 6pm to 7pm

Disabled Access - Yes

Venue 42: Laurieston Railway Arches, Cleland Lane, Glasgow, G5 9DS

GOOD FORTUNE!: GOH OPENING 2017

Belinda Gilbert Scott, Fallopé & the Tubes, Mark Vernon, Rae-Yen Song & Sarah Kenchington

We begin by opening the gates to a ceremony. Come join with us comrades, as we perform and praise new beginnings, current relations, lost loves, ways of life, and divine procreative energy.

Open Friday 7pm to 9pm

Disabled Access - Yes

Venue 42: Laurieston Railway Arches, Cleland Lane, Glasgow, G5 9DS

DOUBLE HAPPINESS!

Belinda Gilbert Scott, Fallopé & the Tubes, Mark Vernon, Rae-Yen Song & Sarah Kenchington

Playing with darkness, darkness, noise, air, flesh, colour, desires and fire, the arches will be awakened with curiosity, dynamism, and outlandish theories as expansive as the cosmos.

Open Friday 7pm -9pm, open daily 12pm to 5pm

Disabled Access - Yes

Venue 43: Flat 1/2, 336 Pollokshaws Road, G41 1QS

The Print Works

David Farrar & Fionnuala McGowan

An exhibition of contemporary print by David Farrar and Fionnuala McGowan, exploring the different ways print can be integrated within the home.

Open Saturday 12pm to 6pm & Sunday 12pm to 6pm

Venue 44: Flat 1/1, 19 Keir Street, G41 2NP

KEIR STREET KITCHEN: Under New Management

Elizabeth Hudson, Marija Nemcenko & Rowan Markson

Keir Street Kitchen is back! Spicier, saucier and meatier, you'll go bananas for it! Join us for a day of events and interventions exploring food histories, relationships and symbolism.
Open Sunday 12pm to 10pm



KEIR STREET KITCHEN: Under New Management - Elizabeth Hudson, Marija Nemcenko & Rowan Markson

Venue 45: Flat 2/2, 44 Herriet Street, G41 2JY

Processual Walls and Fluffy Balls

Jack McCombe & Madeleine Hope-Fraser

Immersive video projections present various recordings of the artist's working within the same space prior to the festival, placing the viewer within the processual nature of the work itself.
Open daily 12pm to 6pm

Venue 46: Flat 1/1, 138 Darnley Street, G41 2SX

Roof Garden ASMR Salon.

Jack Fawcett

A field-recording audio-visual experience based around the utopianism of technology and nature.
Open Saturday 12pm to 6pm & Sunday 12pm to 6pm

Venue 46: Flat 1/1, 138 Darnley Street, G41 2SX

The Unexpectedect

Chloe Fawcett

The narrative qualities of the Glasgow tenement are explored through a range of handcrafted models, jewellery and prints with the precision of architectural models and the character of dollshouses.
Open daily 12pm to 6pm

Venue 47: Flat 1/2, 8 Melville Street, G41 2LN

We Woke Up For a Reason (Love is a Castle)

Andrew John Beltran & Rebecca Sainsot-Reynolds

A fictional interior outpost for collective accumulative action in the year 2017 AD. We invite you to a living room transformed; making do in a room made up. Events/food TBC:
wewokeupforareason.info
Open Saturday 12pm to 6pm & Sunday 12pm to 6pm
Disabled Access - Yes

Venue 48: Flat 0/1, 27 Leven Street, G41 2JD

Live Work

Katie Schwab, Lotte Gertz & Shona Macnaughton

Installed throughout a family home, artworks in the exhibition engage with ideas of domestic space and the objects and rituals that exist there. Performances by Shona Macnaughton Sat and Sun 3-5pm.
Open daily 12pm to 6pm
Disabled Access - Yes



Live Work - Katie Schwab, Lotte Gertz & Shona Macnaughton

Venue 49: Flat 3/1, 2 Maybank Street, G42 8QP

Sun Screen

Aidan Ford, David Stinton & Jack McCombe

An ode to the humble red cabbage. A presentation of the photographic properties of this wonder-vegetable's chemistry writ large on a giant roll of paper and hung for your pleasure throughout our home.
Open Saturday 12pm to 8:30pm, Sunday 12pm to 6pm & Monday 12pm to 6pm

Venue 50: 528 Victoria Road, G42 8BG

that's why i was trying to hit your unicast space

Niels Bugge & Rosie O'Grady

Niels Bugge (California) and Rosie O'Grady (Glasgow) present new video and sculptural work about a worm in the internet router, and the invasive potential of the internet within the home.
Open daily 12pm to 6pm

Venue 51: Flat 1/1, 15 Albert road, G42 8DL

Dreams & Perfume

Beth Shapeero, Charlotte Arnold & Estelle Fournier

The artists exhibit their current dreams and fantasma for the new year to come. Via their works, relics of our time, they question our sense of connection, feelings and ability of projection.
#gravity
Open daily 12pm to 6pm

Venue 52: Flat 2/1, 16 Albert Road, G42 8DN

Go West

Marcin Knyziak

Dominoes games treated as a symbolic map of where the players belong(ed). A mix of photography, cheap video tricks, sound recordings and faked anthropology.
Open daily 12pm to 6pm

Venue 53: Flat 2/1, 493 Victoria Road, G42 8RL

Baba Bog

Jedrzej Cichosz, Marvin Gaye Chetwynd

Baba Bog event is an extension of the Mega Hammer events held in our overdecorated flat on Saturday from 6-9pm. Artists will be free to make DIY, out of tune, free expression and naive performances!
Open Saturday 12pm to 6pm & Sunday 12pm to 6pm



Baba Bog - Jedrzej Cichosz, Marvin Gaye Chetwynd

Venue 54: Flat 1/2, 8 Dixon Avenue, G42 8ED

A Lock of Owen Wilson's Hair

Elaine Ang & Francesca Hawker

A lock of Owen Wilson's hair, is hidden somewhere in this very flat that you got a train to in Govanhill - A Performance Weekend, Episode 1 (Saturday), Episode 2 (Sunday)
Open Saturday 7pm to 9:30pm & Sunday 7pm to 9:30pm

Venue 55: Milk Cafe CIC, 452 Victoria Rd, G42 8YU

Cafe Cinema Up - Milk Cafe's screening: Pray the Devil Back to Hell

Cinema Up Collective

FILM: Pray the Devil Back to Hell: A story of unity and transcendence that showcases how a group of women rise up to peace to Liberia and help bring to power the country's first female head of state.
Open Sunday 7pm to 9pm

Venue 55: Milk Cafe CIC, 452 Victoria Rd, G42 8YU

Sensory Play

Milk Cafe Afterschool Club

Work made by Govanhill Sensory Play Club. Songs about jungles, Yogurt Pot Orchestras, Lifesize monoprint drawing wheels, Kaleidoscopes, Smelly cans, Edible landscapes and slime for miles.
Open Friday 9am-5pm, open daily 10am to 5pm

Venue 56: Flat 3/2, 263 Langside Road, G42 8XX

Native Space / Curious Objects

Hanna Kopp-Young & Rosie Currie

A playfully staged environment of the overlooked and seemingly familiar. We invite viewers to take part in generating and transforming the space, involving them in a participatory creative experience.

Open daily 12pm to 6pm

Venue 57: Flat 3/2, 43 Annette Street, Govanhill, G42 8EH

Active Model

Gordon Douglas, Oliver Sabin, Rebecca Howard, Sally Sears-Black, Seán Elder & Sofie Fischer-Rasmussen

A publication and freeform series of readings, performances and screenings around ideas of Optimism. Editions of the publication and accompanying live elements will be provided on an 'on demand' basis

Open Sunday 12pm to 6pm

Disabled Access - Yes

Venue 58: The Kitchen, 1/1, 624 Cathcart Road, Glasgow, G42 8AA

From the Bench

Matthew Walkerdine

Utilising Graphic Design to form new editions and multiples, From the Bench explores a partial social history of pre-Britpop Indie music, pop cultural fandom, bootlegging and the aesthetics of an era.

Open Friday 9pm to midnight

Venue 59: Flat 2/2, 1023 Cathcart Road, G42 9XJ

Baby you're the boss at home

Caitlin Merrett King, Hannah Reynolds & Kieran Milne

'Baby you're the boss at home' presents paintings by Hannah Reynolds and Caitlin Merrett King, and a new EP by Kieran Milne recorded over the weekend and performed at home on the evening of May 1st.

Open daily 12pm to 6pm

Venue 60: Flat 2/2, 1112 Cathcart road, G42 9EG

36 Questions

Kate Gallagher

Strangers are invited one at a time to take part in the social experiment '36 Questions to Fall In Love' with the artist. Afterwards, we photograph one another.

Open daily 10am to 5pm

Venue 61: 66 Clincart Road, G42 9DU

Take Me 2 ur Dealer ;)

Jacob Kerray & Rosie Roberts

Trebla C and Senrab Bitt are aliens living in Mount Florida, they have been collecting humanart around Glasgow and beyond. After years of speculation they will kindly open their doors to humanpublic.

Open daily 12pm to 6pm

Disabled Access - Yes

Venue 62: 12 Onslow Court, 16 Lethington Avenue, G41 3HB

Jelly Room

Gillian Martin

The party's over, but don't forget to take your jelly.

Open Saturday 12pm to 6pm & Sunday 12pm to 6pm

Venue 63: Flat 0/2, 103 Deanston Drive, G41 3AL

Southside Cinerama

Richard Martin

Adapting the common bay window of Glasgow's tenements to create a small cinerama for a screening of the epic Western film 'How The West Was Won' (1962).

Open Saturday 4pm to 7pm & Sunday 4pm to 7pm

Venue 64: Flat 3/1, 141 Deanston drive, G41 3LP

Flatland

Emer Tumilty & Emma Sandström

An exhibition and collaboration of work will be made in response to our relationship with the domestic setting.

Open daily 12pm to 6pm

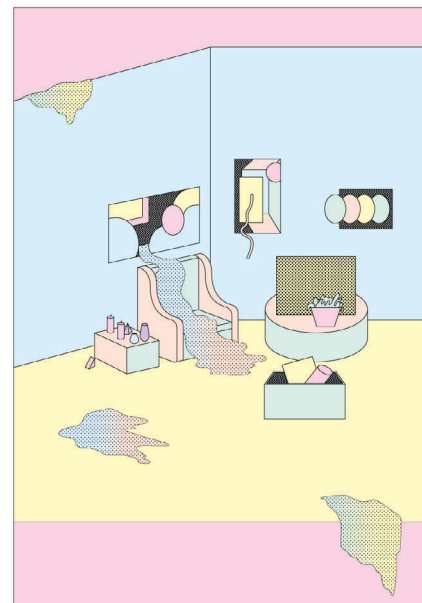
Venue 64: Flat 3/1, 141 Deanston drive, G41 3LP

Sweetie Palm Wine

Beth Chalmers & C Campbell

A series of film photographs depicting four weeks of study, exploration and partying in the rural Volta Region of Ghana in November 2016; highlighting the lives of the local people and their art.

Open daily 12pm to 6pm



Flatland - Emer Tumilty & Emma Sandström



Sweetie Palm Wine - Beth Chalmers & C Campbell

Venue 65: Flat 2/1, 11 Grantley Street, G41 3PT

Suttahscape

Harry Rogan-Jones & Olivia Jones

Suttahscape is a mother/son collaboration between Harry Rogan-Jones and Olivia Jones. The work will seek to examine notions of the everyday, compromise, humour and value in children's work.

Open Saturday 12pm to 6pm, Sunday 12pm to 4pm & Monday 12pm to 5:30pm

Venue 66: Flat 1/1, 57 Tassie Street, Glasgow, G41 3QG

An Alien Word You Want to Say

Alison McBride & Giovanni Giacoia

A participatory event where English language is forbidden. Other means of communication, including drawing, will be facilitated, encouraged and rewarded. Come and enjoy this migratory experiment.

Open Saturday 2pm to 5pm & Sunday 2pm to 5pm

Venue 67: Flat 0/2, 15 Trefoil Avenue, Shawlands, G41 3PD

IGNORE THE RADIATORS

Clarinda Tse, Katherine Ka Yi Liu, Katy Hundertmark & Niamh Forbes

Radiators become a backdrop of a collaborative experience -- cat mumbles, capacity of a whale, a megaphone and a telephone mail box. Audio work will be played on the hour throughout the exhibition.

Open daily 12pm to 6pm

Disabled Access - Yes

Venue 68: 990 Pollokshaws Road, G41 2HA

Camphill Gate Open House

Camphill Gate Residents Association and the Glad Cafe

Exhibitions and live music taking place throughout the Camphill Gate building and Glad Cafe including work by Sarah J Stanley, Rachael Rebus, Josée Aubin Ouellette and The People's Bank of Govanhill.

Open Saturday 12pm to 6pm & Sunday 12pm to 6pm

Disabled Access - Yes

Venue 69: www.facebook.com/andrew.houston.14203

I SIT AND...

Andrew Houston

I SIT AND... is a series of hyperreal online performances for anyone to see, like? and comment on. Available throughout the festival at: www.facebook.com/andrew.houston.14203

Open daily 12pm to 4pm

Disabled Access - Yes

GLASGOW OPEN HOUSE 2017 TEAM

Co-director - Anna Crilly
Co-director - Zoe Pearson
Outreach - El Paul
Marketing - Sonia Hufton
Events & fundraising - Jemma Hatherill
Web and Tech - Liam Fogerty
Design - Sean Mulvenna

SPECIAL THANKS TO

James Sayer
Pheobe Barnicoat
Amalie Silvani Jones
Hugh Crilly
Huw Pearson
Florence Dwyer
Kate Timney
Sam De Santis
Stefan Krajcik
Apsi Witana
Anna Grady
Christine Hodgkinson
Brendan McMahon
Robyn McMahon
Diana Fisher
Robin Pearson
Anna Pearson
Ken Reid
Emma Aitken
Neil McGuire

Glasgow Zine Fest
Cardonald College
Offset Warehouse
Coach House Trust
Project Ability
Project Cafe
Milk CIC Art Group
CinemaUP collective
Babaloose
Bart Waltz collective

Everyone who donated
to and supported our
fundraiser

The Glasgow Open
house 2017 artists

